

# Always there to help you

Register your product and get support at  
[www.philips.com/welcome](http://www.philips.com/welcome)

DS7530/05



## User manual

# PHILIPS

# Contents

---

<b>1</b>	<b>Important</b>	<b>3</b>
----------	------------------	----------

---

<b>2</b>	<b>Your Docking Speaker</b>	<b>4</b>
	Introduction	4
	What's in the box	4
	Overview of the main unit	5

---

<b>3</b>	<b>Get started</b>	<b>6</b>
	Connect power	6
	Turn on	7

---

<b>4</b>	<b>Play</b>	<b>8</b>
	Play from iPod/iPhone	8
	Play from Bluetooth device	8
	Play from an external audio device	9
	Adjust volume	9

---

<b>5</b>	<b>Product information</b>	<b>10</b>
	Specifications	10

---

<b>6</b>	<b>Troubleshooting</b>	<b>11</b>
	About Bluetooth device	11

---

<b>7</b>	<b>Notice</b>	<b>12</b>
----------	---------------	-----------

# 1 Important

- Follow all instructions.
- Do not block any ventilation openings. Install in accordance with the manufacturer's instructions.
- Do not install near any heat sources such as radiators, heat registers, stoves, or other apparatus (including amplifiers) that produce heat.
- Protect the power cord from being walked on or pinched, particularly at plugs, convenience receptacles, and the point where they exit from the apparatus.
- Only use attachments/accessories specified by the manufacturer.
- Unplug this apparatus during lightning storms or when unused for long periods of time.
- Refer all servicing to qualified service personnel. Servicing is required when the apparatus has been damaged in any way, such as power-supply cord or plug is damaged, liquid has been spilled or objects have fallen into the apparatus, the apparatus has been exposed to rain or moisture, does not operate normally, or has been dropped.
- Battery usage CAUTION – To prevent battery leakage which may result in bodily injury, property damage, or damage to the unit:
  - Install all batteries correctly, + and - as marked on the unit.
  - Do not mix batteries (old and new or carbon and alkaline, etc.).
  - Remove batteries when the unit is not used for a long time.
  - Batteries (battery pack or batteries installed) shall not be exposed to excessive heat such as sunshine, fire or the like.
- Apparatus shall not be exposed to dripping or splashing.

- Do not place any sources of danger on the apparatus (e.g. liquid filled objects, lighted candles).
- Where the plug of the Direct Plug-in Adapter is used as the disconnect device, the disconnect device shall remain readily operable.



## Warning

- Never remove the casing of this apparatus.
- Never place this apparatus on other electrical equipment.
- Keep this device away from direct sunlight, naked flames or heat.
- Ensure that you always have easy access to the power cord, plug or adaptor to disconnect the apparatus from the power.

# 2 Your Docking Speaker

Congratulations on your purchase, and welcome to Philips! To fully benefit from the support that Philips offers, register your product at [www.philips.com/welcome](http://www.philips.com/welcome).

If you contact Philips, you will be asked for the model and serial number of this apparatus. The model number and serial number are on the back of the apparatus. Write the numbers here:

Model No. \_\_\_\_\_

Serial No. \_\_\_\_\_

---

## Introduction

With this docking speaker, you can enjoy audio from the iPod/iPhone, Bluetooth devices, and other external audio devices.

---

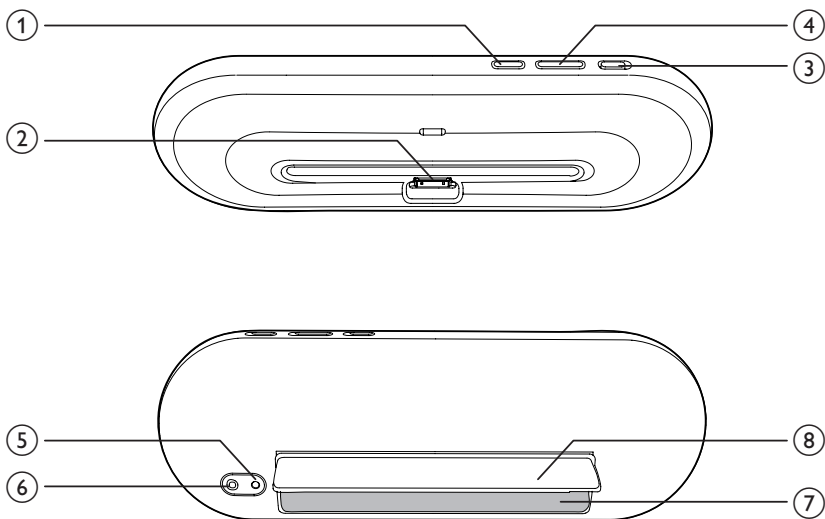
## What's in the box

Check and identify the contents of your package:

- Main unit
- AC power adaptor
- Quick start guide

---

## Overview of the main unit



- ① **Bluetooth**
  - Enable or disable Bluetooth function.
- ② **Dock for the iPod/iPhone**
- ③ **ON/OFF**
  - Switch on/off the docking speaker.
- ④ **-VOLUME +**
  - Adjust volume.
- ⑤ **DC IN**
  - Connect power.
- ⑥ **AUX IN**
  - Connect an external audio device.
- ⑦ **Battery compartment**
- ⑧ **Stand foot**

# 3 Get started

Always follow the instructions in this chapter in sequence.

## Connect power

This docking speaker can be powered by either AC power or batteries.

### Option 1: AC power

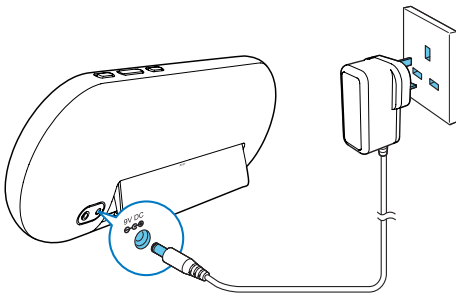


#### Caution

- Risk of product damage! Make sure that the power supply voltage matches the voltage printed on the back of the unit.
- Risk of electric shock! When you unplug the AC adapter, always pull the plug from the socket. Never pull the cord.

Connect the AC power adapter to:

- the power socket at the back of the docking speaker.
- the wall socket.



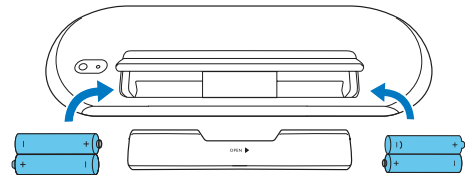
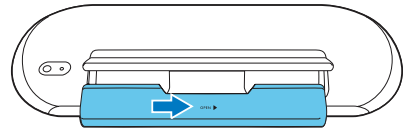
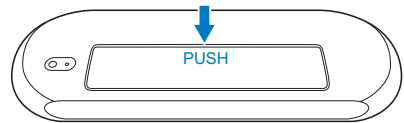
### Option 2: Battery power



#### Caution

- Risk of explosion! Keep batteries away from heat, sunshine or fire. Never discard batteries in fire.
- Remove batteries if they are exhausted or will not be used for a long time.
- Batteries contain chemical substances, so they should be disposed of properly.

- 1 Open the battery compartment.
- 2 Insert 4 x 1.5V AA batteries with correct polarity (+/-) as indicated.
- 3 Close the battery compartment.



---

## Turn on

Switch the power button to **ON** position to turn on the docking speaker:

- ↳ The LED indicator lights up.

---

## Switch to standby mode

The docking speaker switches to economic standby mode in the following situation:

- The speaker is idle for 15 minutes when powered by AC supply;
- The iPod/iPhone or external audio device is disconnected when the speaker is operated on batteries.
  - ↳ The LED indicator lights off.

# 4 Play

---

## Play from iPod/iPhone

You can enjoy audio from your iPod/iPhone through this docking speaker.

---

### Compatible iPod/iPhone

The docking speaker supports the following iPod and iPhone models:

Made for:

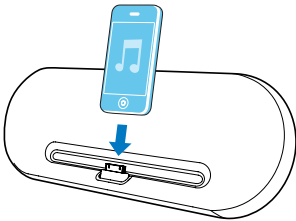
- iPod touch (2nd, 3rd, and 4th generation)
- iPod classic
- iPod nano (1st, 2nd, 3rd, 4th, 5th, and 6th generation)
- iPhone 4S
- iPhone 4
- iPhone 3GS
- iPhone 3G

---

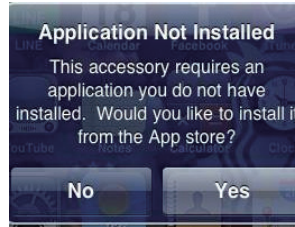
### Listen to the iPod/iPhone

Philips **DockStudio** app brings a suite of new features to your docking speaker, including Internet radio and a multi-function alarm clock. To enjoy more features, you are recommended to install this free application.

- 1 Switch the power button to **ON** position.  
↳ The LED indicator lights up.
- 2 Insert the iPod/iPhone into the dock.



- 3 For first-time use, you will be asked to install **DockStudio** app on your iPod/iPhone.
- 4 Tap **[Yes]** (yes) to accept the installation request.
- 5 Follow the on-screen instructions to complete the installation.



- 6 Launch the app after the installation.
- 7 Play audio on your iPod/iPhone.  
↳ You can hear audio from this docking speaker.

---

### Charge the iPod/iPhone

When the docking speaker is connected to power, the docked iPod/iPhone begins to charge automatically.

---

## Play from Bluetooth device

---

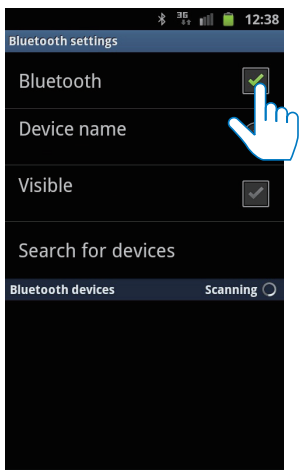
### Pair with Bluetooth devices

#### Note

- Before you connect a Bluetooth device to this docking speaker, familiarize yourself with the Bluetooth capabilities of the device.
- The effective operation range between the docking system and the paired device is approximately 10 meters (30 feet).
- Keep this docking speaker away from other electronic devices that may cause interference.



- 1 Press **Bluetooth** to select Bluetooth source.
  - ↳ The Bluetooth button blinks.
- 2 Turn on Bluetooth function on your device.
  - Different devices may have different way to activate Bluetooth.



- 3 Scan Bluetooth devices that can pair with your device.
- 4 When “DS7530” is displayed on your device, select it to start connection.
  - ↳ Double beep tone confirmation is heard and the Bluetooth button stops blinking if connection is successful.
  - ↳ A different Bluetooth icon is displayed on your device.
- 5 Play music in your device.
  - ↳ Music comes through the docking speaker.



#### Tip

- If your Bluetooth device has been paired with DS7530 before, you just need to find out “DS7530” on your Bluetooth menu, then confirm the connection.

#### To disconnect Bluetooth:

- Press **Bluetooth** on the docking speaker again.
- Deactivate Bluetooth function on your device or move it beyond the communication range.

## Play from an external audio device

With this docking speaker, you can also enjoy audio from an external device such as an MP3 player.



#### Note

- Make sure that no iPod/iPhone is docked in the docking speaker.

- 1 Connect an MP3 link cable (not supplied) to:
  - the **AUX IN** socket at the back of the docking speaker.
  - the headphone socket on an external device.
- 2 Play music on the device (see the device's user manual).

## Adjust volume

During play, press **-VOLUME +** to adjust volume.

# 5 Product information



## Note

- Product information is subject to change without prior notice.

## Specifications

### Amplifier

Total Output Power	2 x 5 W RMS
Signal to Noise Ratio	>60 dBA
MP3 Link	0.6 V RMS 22 kohm

### Bluetooth

Standard	Bluetooth Standard Version 2.1+EDR
Output power	4 dBm (Class 2)
Frequency band	2.402 ~ 2.480 GHzISM Band
Range	10 m (free space)

## General information

Power supply	
-AC Power	Model: S018KB0900200 (Philips); Input: 100-240 V ~ 50/60Hz, 500mA; Output: 9V === 2000 mA
-Battery power	4 x AA batteries
Operation Power Consumption	<18 W
Eco Standby Power Consumption	<0.5 W
Max. load for iPod/iPhone	5 V === 1 A
Dimensions	
- Main Unit (W x H x D)	311 x 111 x 37.6mm
Weight	
- Main Unit	0.28 kg

# 6 Troubleshooting



## Warning

- Never remove the casing of this device.

To keep the warranty valid, never try to repair the system yourself.

If you encounter problems when using this device, check the following points before requesting service. If the problem remains unsolved, go to the Philips Web page ([www.philips.com/support](http://www.philips.com/support)). When you contact Philips, make sure that the device is nearby and the model number and serial number are available.

### No power

- Ensure that the AC power plug of the unit is connected properly.
- Ensure that there is power at the AC outlet.

### No sound

- Adjust the volume.

### No response from the unit

- Disconnect and reconnect the AC power plug, then turn on the unit again.

---

## About Bluetooth device

**Music playback is unavailable on the system even after successful Bluetooth connection.**

- The device cannot be used with the system to play music.

**The audio quality is poor after connection with a Bluetooth-enabled device.**

- The Bluetooth reception is poor: Move the device closer to the system or remove any obstacle between the device and the system.

**Cannot connect with the system.**

- The device does not support the profiles required for the system.
- The Bluetooth function of the device is not enabled. Refer to the user manual of the device for how to enable the function.
- The system is not in the pairing mode.
- The system is already connected with another Bluetooth-enabled device. Disconnect that device or all other connected devices and then try again.

**The paired device connects and disconnects constantly.**

- The Bluetooth reception is poor: Move the device closer to the system or remove any obstacle between the device and the system.
- For some devices, the Bluetooth connection may be deactivated automatically as a power-saving feature. This does not indicate any malfunction of the system.

# 7 Notice

Any changes or modifications made to this device that are not expressly approved by Philips Consumer Lifestyle may void the user's authority to operate the equipment.



"Made for iPod" and "Made for iPhone" mean that an electronic accessory has been designed to connect specifically to iPod or iPhone respectively, and has been certified by the developer to meet Apple performance standards. Apple is not responsible for the operation of this device or its compliance with safety and regulatory standards. Please note that the use of this accessory with iPod or iPhone may affect wireless performance. iPod and iPhone are trademarks of Apple Inc., registered in the U.S. and other countries.

# CE 0890

This product complies with the radio interference requirements of the European Community.



Your product is designed and manufactured with high quality materials and components, which can be recycled and reused.



When this crossed-out wheeled bin symbol is attached to a product it means that the product is covered by the European Directive 2002/96/EC.

Please inform yourself about the local separate collection system for electrical and electronic products.

Please act according to your local rules and do not dispose of your old products with your normal household waste. Correct disposal of your old product helps to prevent potential negative consequences for the environment and human health.



Your product contains batteries covered by the European Directive 2006/66/EC, which cannot be disposed with normal household waste. Please inform yourself about the local rules on separate collection of batteries because correct disposal helps to prevent negative consequences for the environmental and human health.

### Environmental information

All unnecessary packaging has been omitted. We have tried to make the packaging easy to separate into three materials: cardboard (box), polystyrene foam (buffer) and polyethylene (bags, protective foam sheet.)

Your system consists of materials which can be recycled and reused if disassembled by a specialized company. Please observe the local regulations regarding the disposal of packaging materials, exhausted batteries and old equipment.

### Note

- The type plate is located inside the stand foot of the docking speaker.

# PHILIPS

Philips Consumer Lifestyle  
HK-1225- DS7530  
(Rapport No. / Numero di Rapporto)

Year 2012

(Year in which the CE mark is affixed / Année au cours de laquelle le marquage CE est apposé)

## EC DECLARATION OF CONFORMITY

(DECLARATION DE CONFORMITE CE)

We / Nous, PHILIPS CONSUMER LIFESTYLE B.V.

(Name / Nom de l'entreprise)

TUSSENDIEPEN 4, 9206 AD DRACHTEN, THE NETHERLANDS

(address / adresse)

Declare under our responsibility that the electrical product(s)

(Déclare sous notre propre responsabilité, que le(s) produit(s) électriq(u)e(s))

PHILIPS

DS7530/05\_ /12

Docking Speaker

(Type version of model, reference or model)

(Product description, description du produit)

To which this declaration relates is in conformity with the following harmonized standards:

(Aquel cette déclaration se rapporte, est conforme aux normes harmonisées suivantes)

(Title, number and date of issue of the standard / Titre, numéro et date de parution de la norme)

EN60065:2002 + A1:2006 +A11:2008 +A2:2010 +A12:2011

EN 301 489-1 V1.8.1

EN 300 328 V1.7.1

EN5020:2007

EN 1000-5:2008

EN62301:2005

Following the provisions of :

(Conformément aux exigences essentielles et autres dispositions pertinentes de :)

1989/5/EC (R&TTE Directive)

2006/95/EC (Low Voltage Directive)

2004/108/EC (EMC Directive)

2011/65/EU (RoHS Directive)

2009/125/EC (ErP Directive)

- EC/1275/2008, EC/278/2009

And are produced under a quality scheme at least in conformity with ISO 9001 or CENELEC

Permanent Documents (Et sont fabriqués conformément à une qualité au moins conforme à la norme ISO 9001 ou aux Documents Permanents CENELEC)

The Notified Body

SGS Fimko

SGS Guangzhou

(Name and number / nom et numéro)

performed

(is effected / a effectué)

R&TTE Test

(description of intervention / description de l'intervention)

FI 7287

159/004/1/G

(certificate number / numéro du certificat)

Remarks:

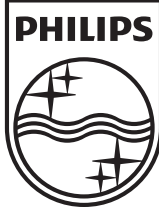
(Remarques :)

Drachten, Netherlands, June 19, 2012

(place, date / lieu, date)

A. Speelman, CL Compliance Manager

(signature, name and function / signature, nom et fonction)



Specifications are subject to change without notice  
© 2012 Koninklijke Philips Electronics N.V.  
All rights reserved.

DS7530\_05\_UM\_V2.1



Philips Consumer Lifestyle

AMB 544-9106